

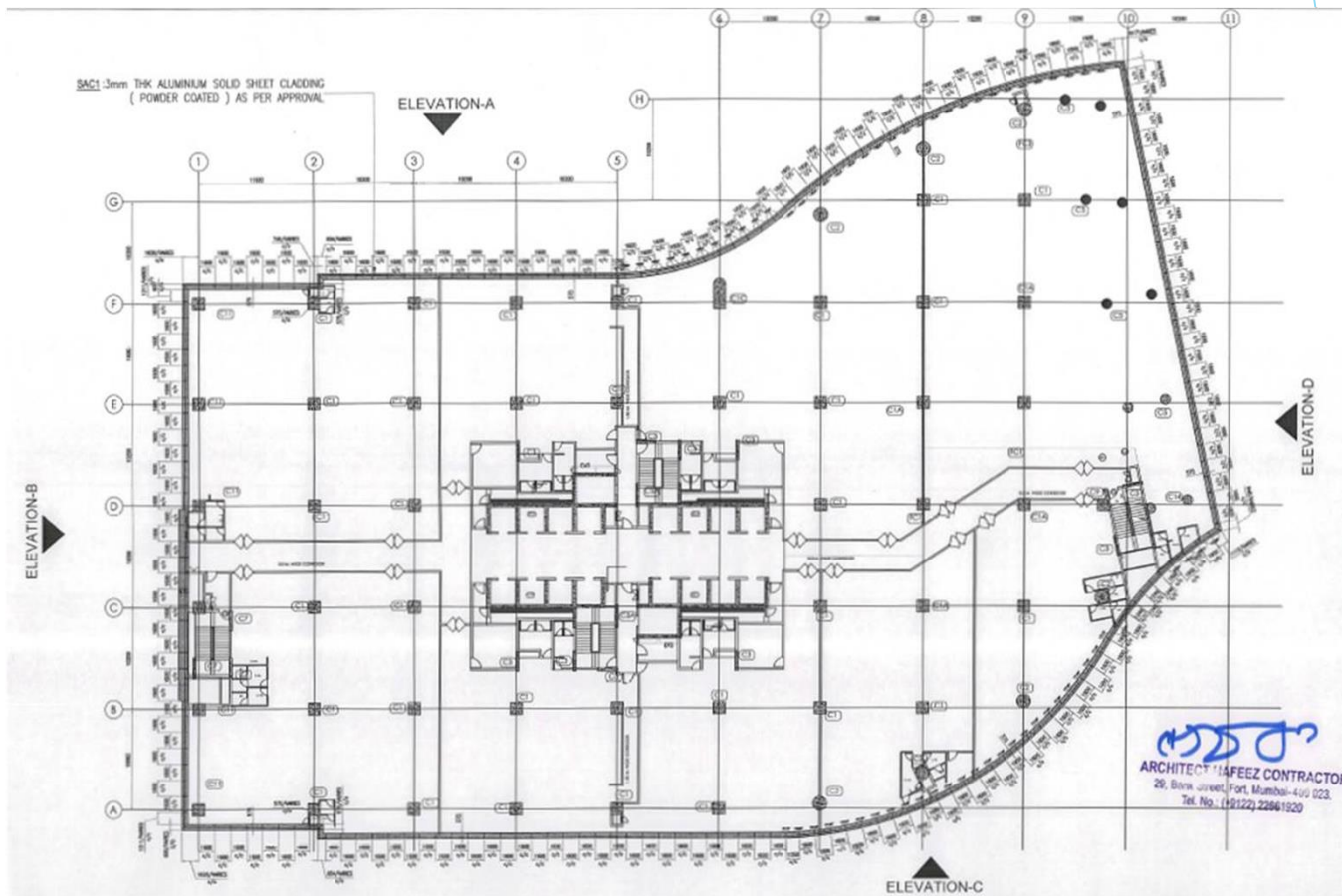
PROJECT : INSPIRE BKC



Inspection Report Prepared by:
Pankaj Ghare (Landscape Wall Systems) 9819663630

TYPICAL PLAN DIRECTION

REAR ELEVATION-B



LEFT ELEVATION-C



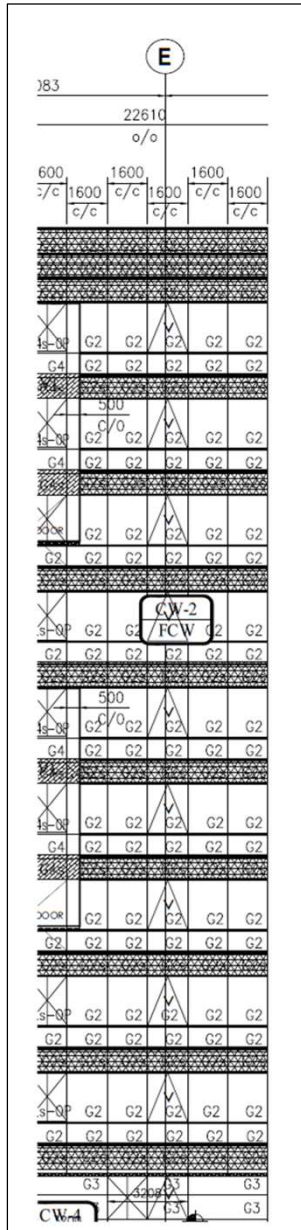
RIGHT ELEVATION-A



FRONT ELEVATION -D



PARTIAL ELEVATION IMAGE



INSPECTION -1

REAR ELEVATION-B

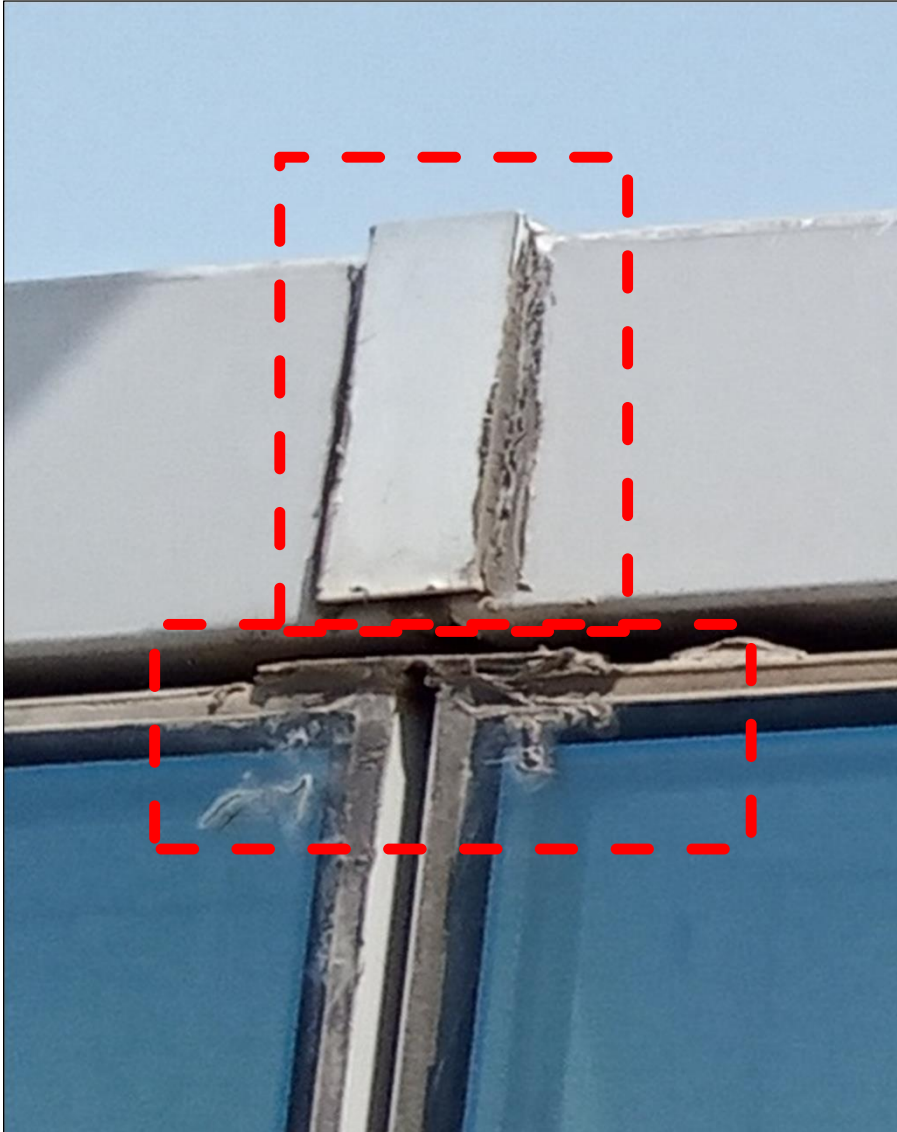
Location of Cradle :

Grid E, along 2 panels, From Second Floor To Top Edge of Aluminium Panel

Inspection By: Pankaj Ghare,
Cradle Operator, Anand Sharma
Date : 4 February 2022

• INSPECTION AND SOLUTIONS

LEFT ELEVATION



Location

Terrace Floor

Observations:

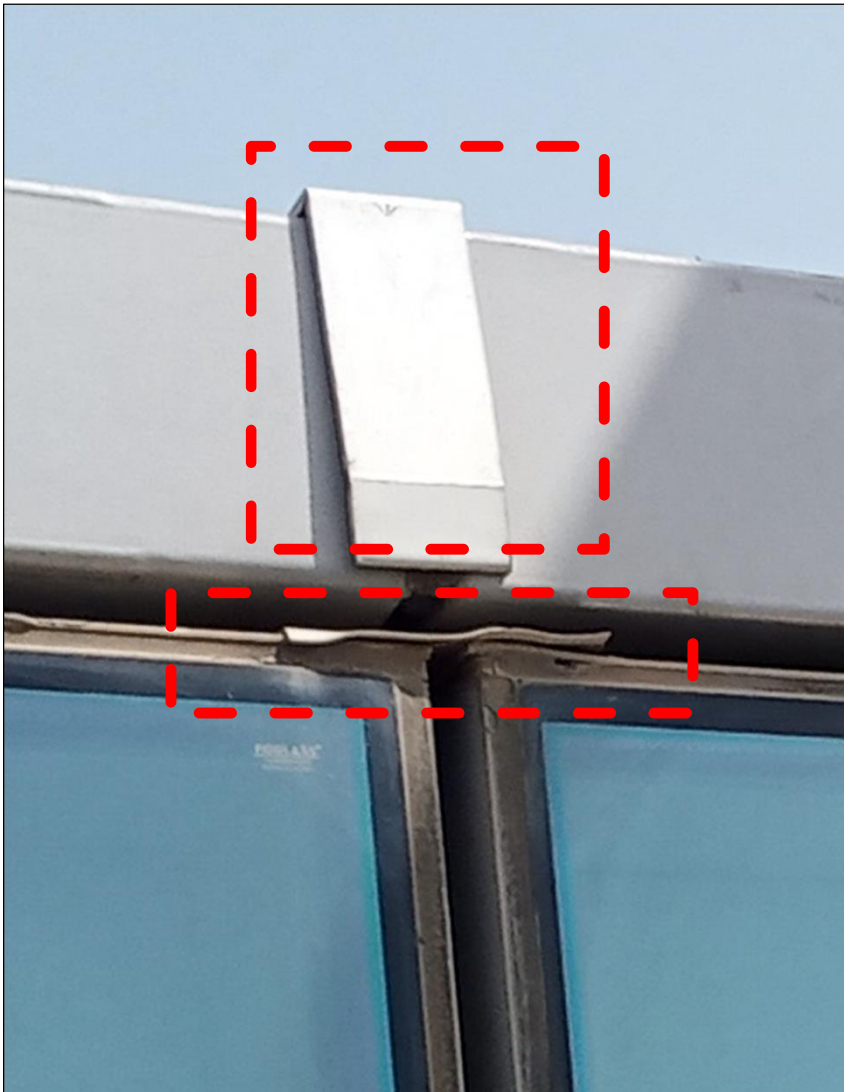
- Insufficient Silicone Filling at Side of ACP Strips
- Insufficient packing at top of Mullion

Solution:

- Remove existing old silicone and replace with Fresh Silicone
- Fill the Gap at sides of Covering plate by Backer Rod and apply silicone at sides

• INSPECTION DETAILS

LEFT ELEVATION



Location

Terrace Floor

Observations:

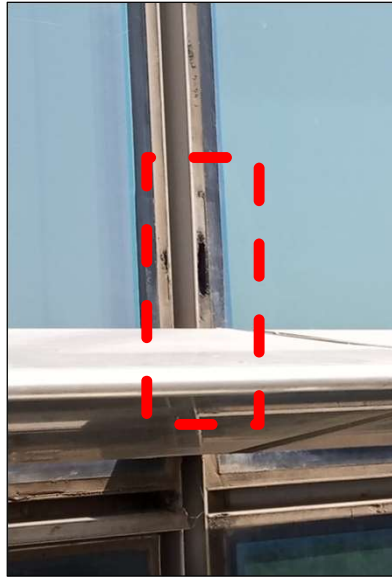
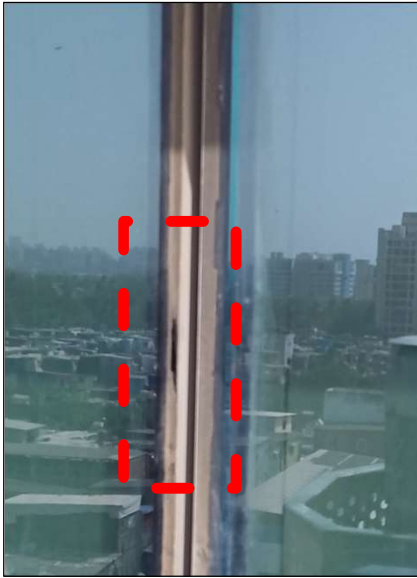
- Absence of Silicone at Side of ACP Strips
- Insufficient packing at top of Mullion

Solution:

- Apply with Fresh Silicone at sides of ACP strips.
- Fill the Gap at sides of Covering plate by Backer Rod and apply silicone at sides

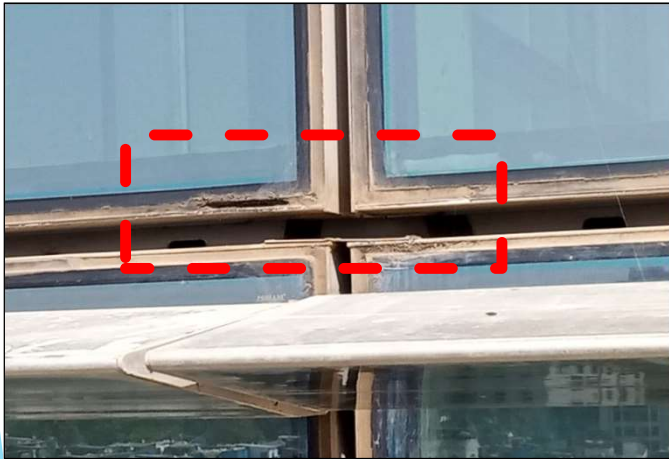
INSPECTION DETAILS

LEFT ELEVATION



Location: Various Locations

Silicone Removed (by Birds)



• INSPECTION DETAILS

LEFT ELEVATION



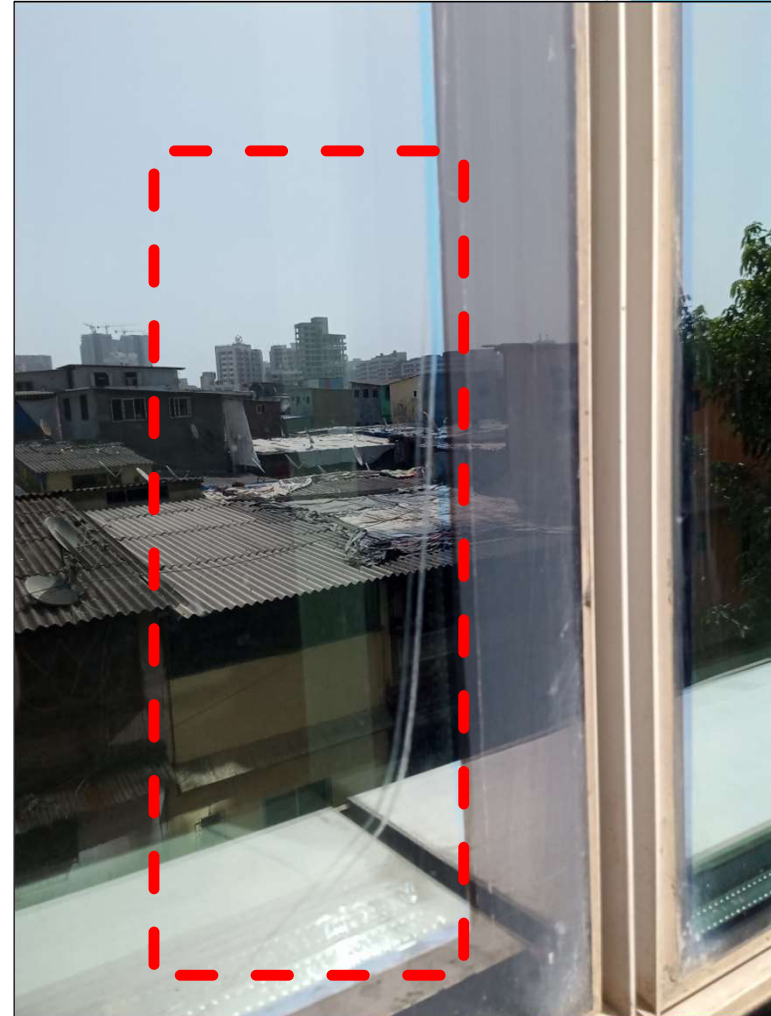
Location: Various Locations

Screws used for Fixing the toggles to be removed and Fresh Silicone to be applied

• INSPECTION DETAILS

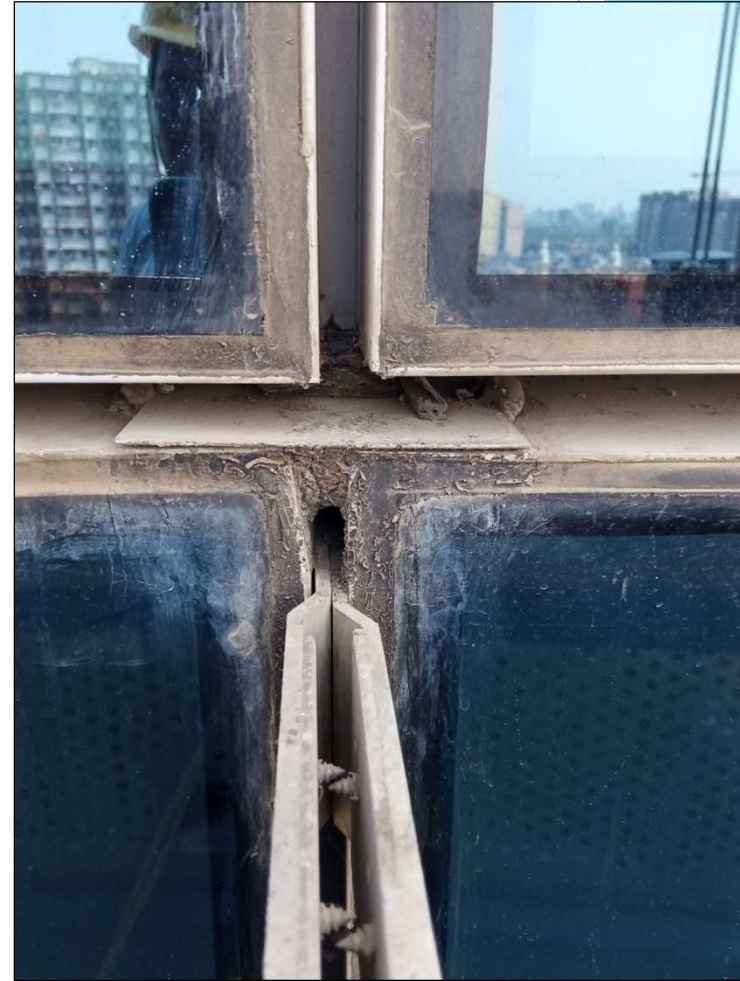
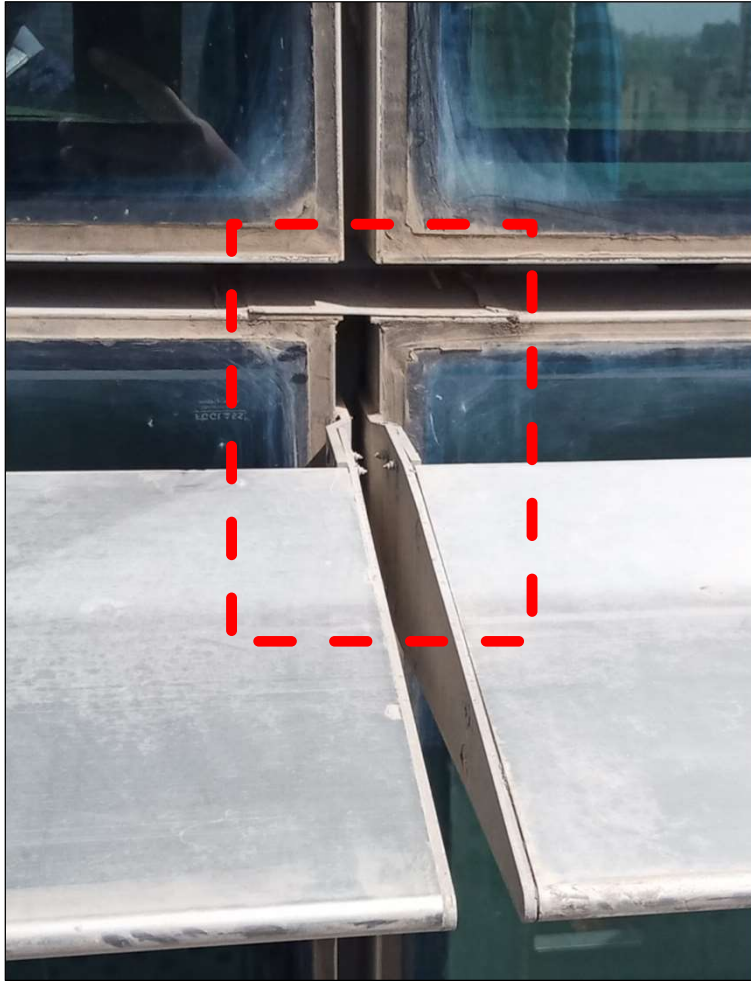


Scratches (Hairline Cracks) on Glass
Floor :3rd Floor ; Panel below Openable Window



Big Scratch on 2nd Floor ; Panel below Openable Window

• INSPECTION DETAILS



Grooves to be filled with Silicone at Top of Bracket wherever possible and wherever left
(Image at Right Side is noted at Elevation A, near Grid 6 where silicone is place at bracket)

• INSPECTION DETAILS



Dirty Spot on Glass from Inside

Floor :3rd Floor ; Panel to be checked from Inside



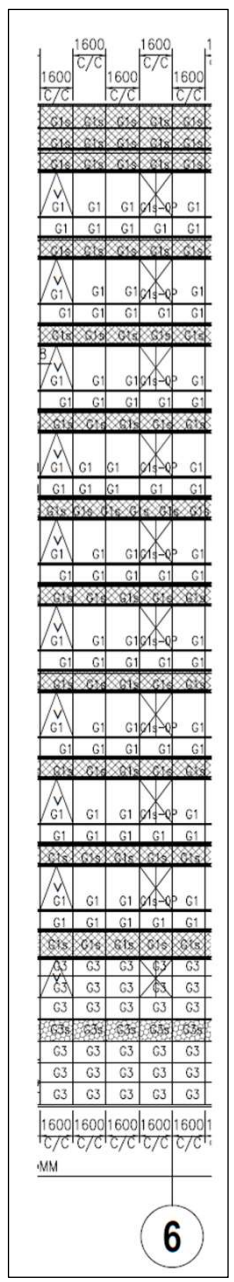
Broken Toughened Glass at second floor

- Broken Glass at second floor is not replaced after shifting the cradle at this location. (only at 5th floor, broken glass is replaced.
- This happens because of Impurity (Nickel Sulphide Inclusion) in Glasses.
- This can be avoided by Heat Soaking Process on Glasses during Fabrication.
- It costs higher than Non Heat Soaked glass and for Smaller Quantity Processors do not take order for Heat Soaking .

- INSPECTION DETAILS



PARTIAL ELEVATION IMAGE



INSPECTION -2

PARTIAL SIDE ELEVATION-A

Location of Cradle :

Near Grid 6, towards Grid 7, along 2 panels, From Second Floor To Top Edge of Aluminium Panel

Inspection By: Pankaj Ghare,
 Cradle Operator, Ajay Chauhan
 Date : 11th February 2022

• INSPECTION DETAILS



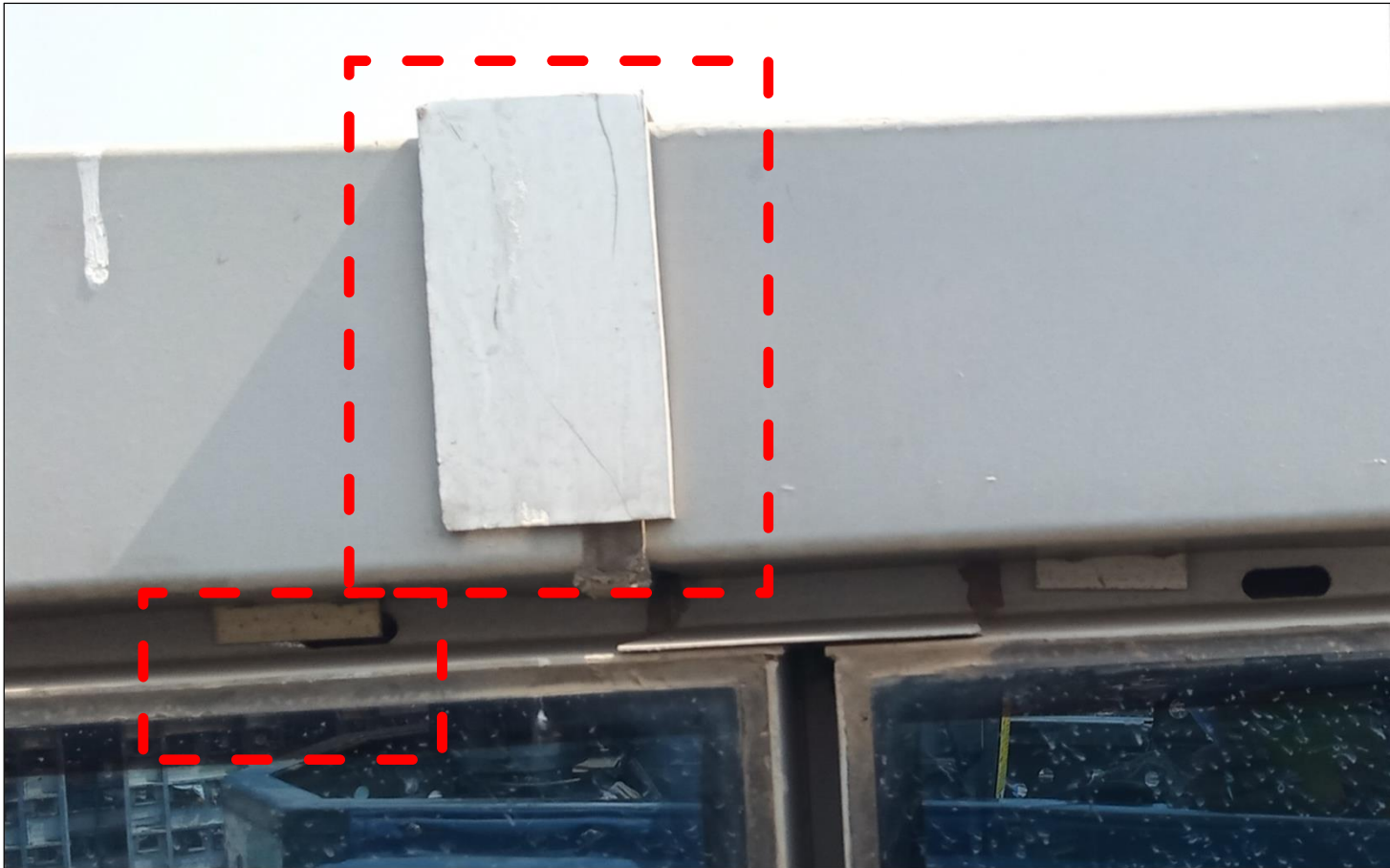
Location: 3rd Floor ; Panel besides Openable Panel

Observation: Water accumulation at the Openable Window to be checked from Inside

Broken Toughened Glass at second floor

- Length of Flashing Protruding outside seems less.
- If required additional flashing maybe required

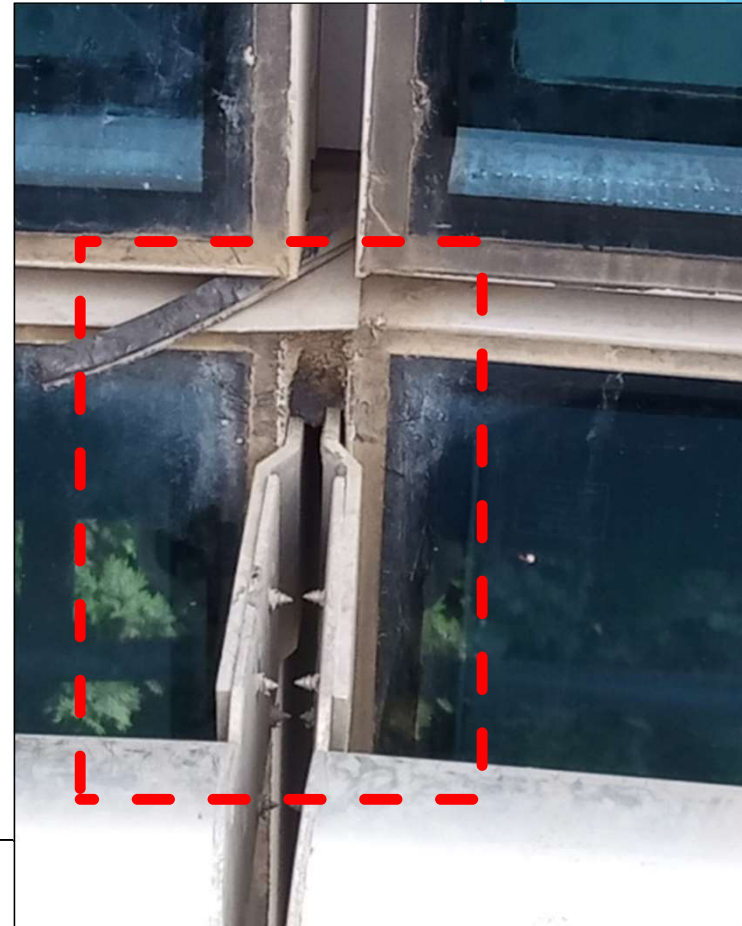
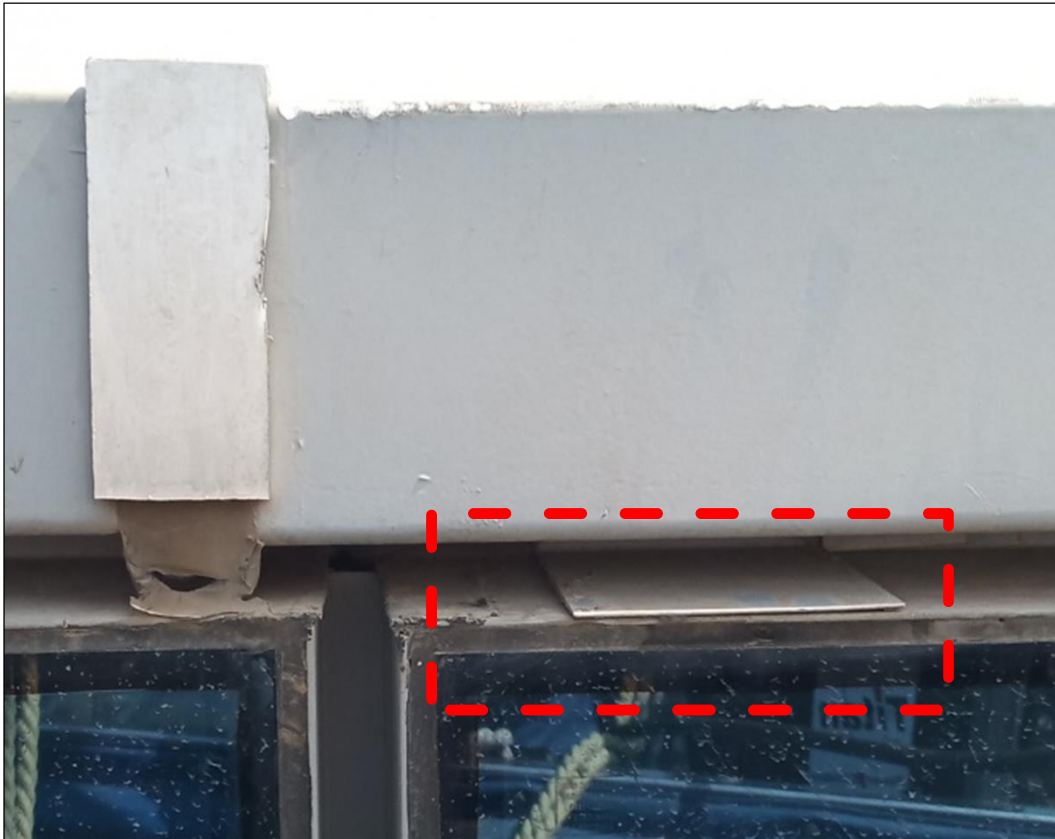
• INSPECTION DETAILS



Location : Terrace Level

Observation : Weep Hole is obstructed by 1mm Thk. Aluminium Sheet. Silicone missing at the sides of ACP strip.

• INSPECTION DETAILS

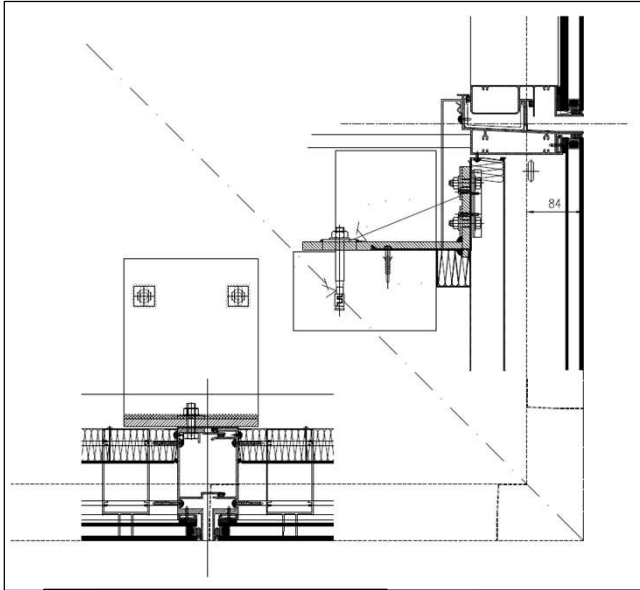


Location : Terrace Level

Observation: Dislodge 1mm Thk. Aluminium sheet. Should be placed as like in another image.

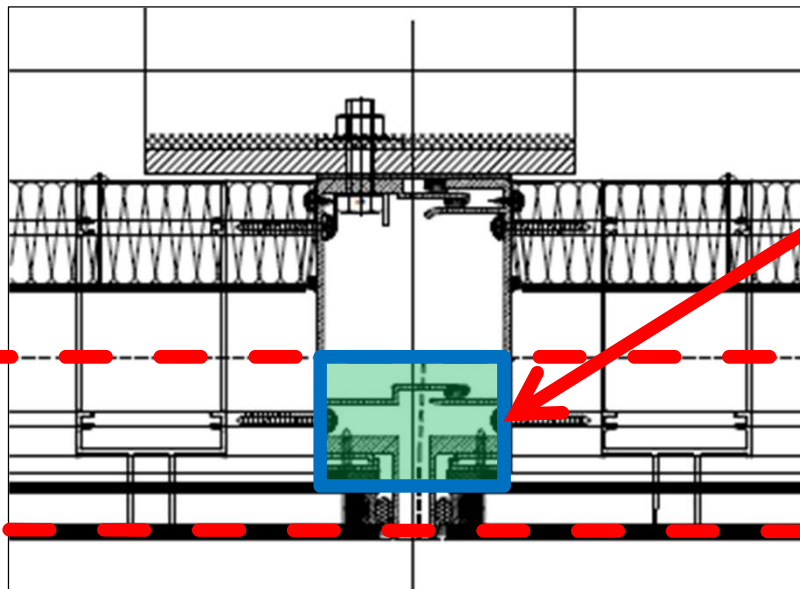
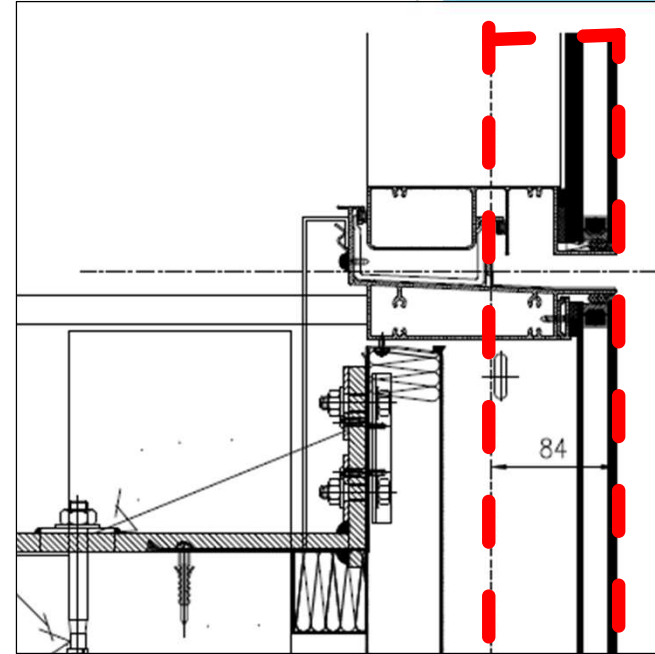
Solution: Silicone with Baker Rod to be placed at every location where such Alum sheet is placed for confirmation of proper closure at mullion

INSPECTION DETAILS



PLAN DETAIL

SECTION DETAIL



**AREA
COVERED BY
GI SHEET
(IN PLAN)**

**AREA AFFECTED
DUE TO
DISLODGE-
MENT
OF GI SHEET**

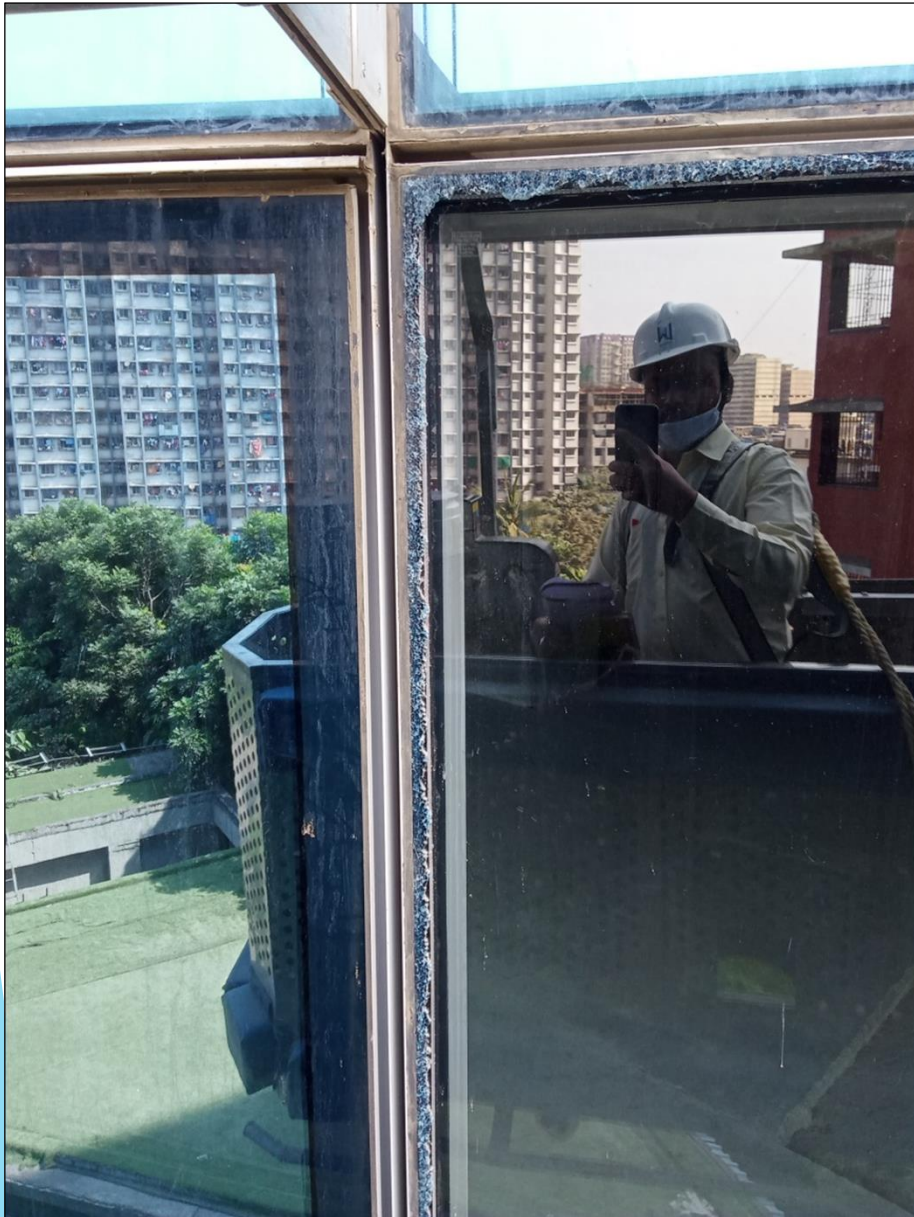
• INSPECTION DETAILS



Location: Various Locations

Silicone Removed (by Birds)

• INSPECTION DETAILS

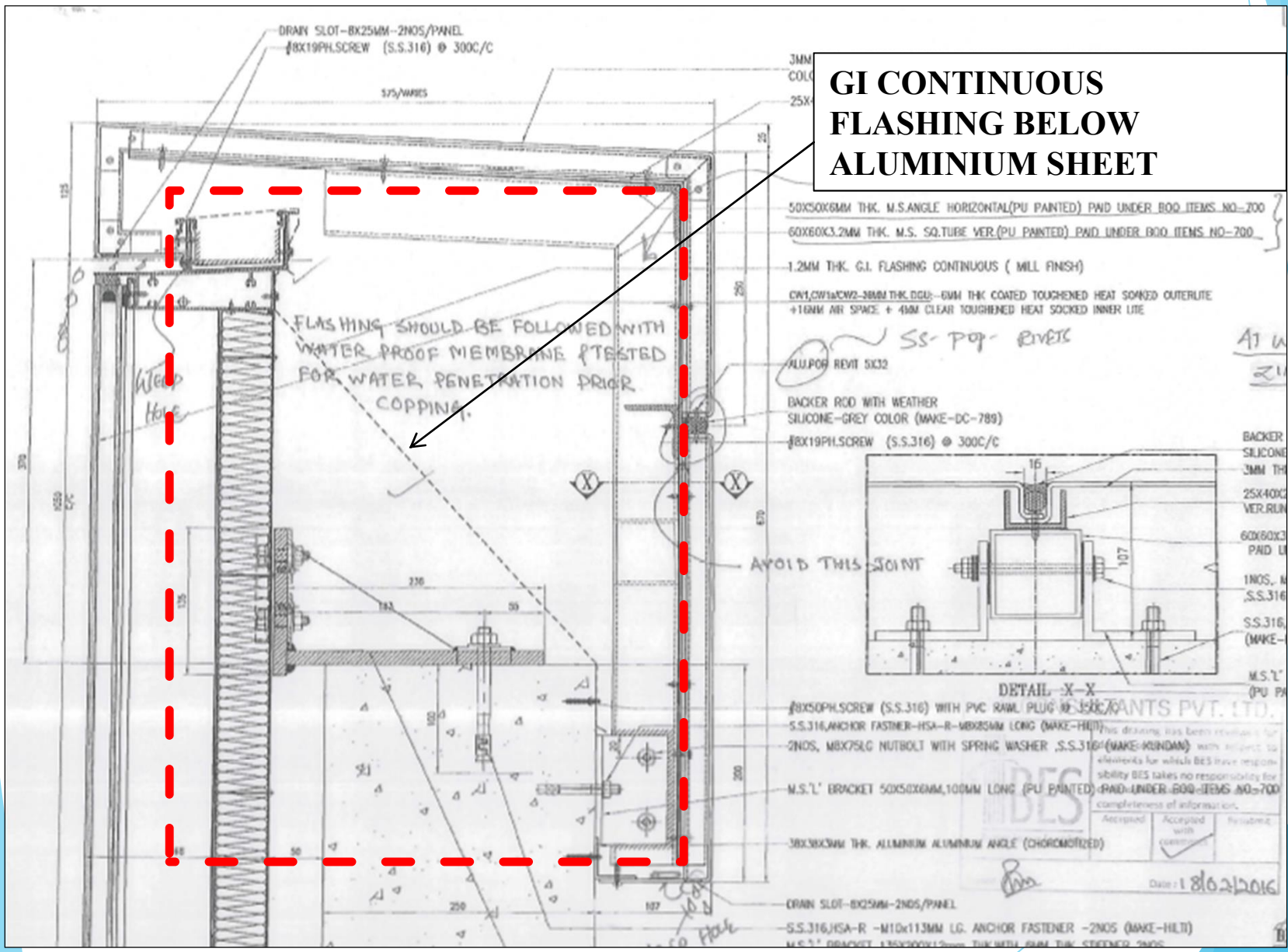


Broken Glass

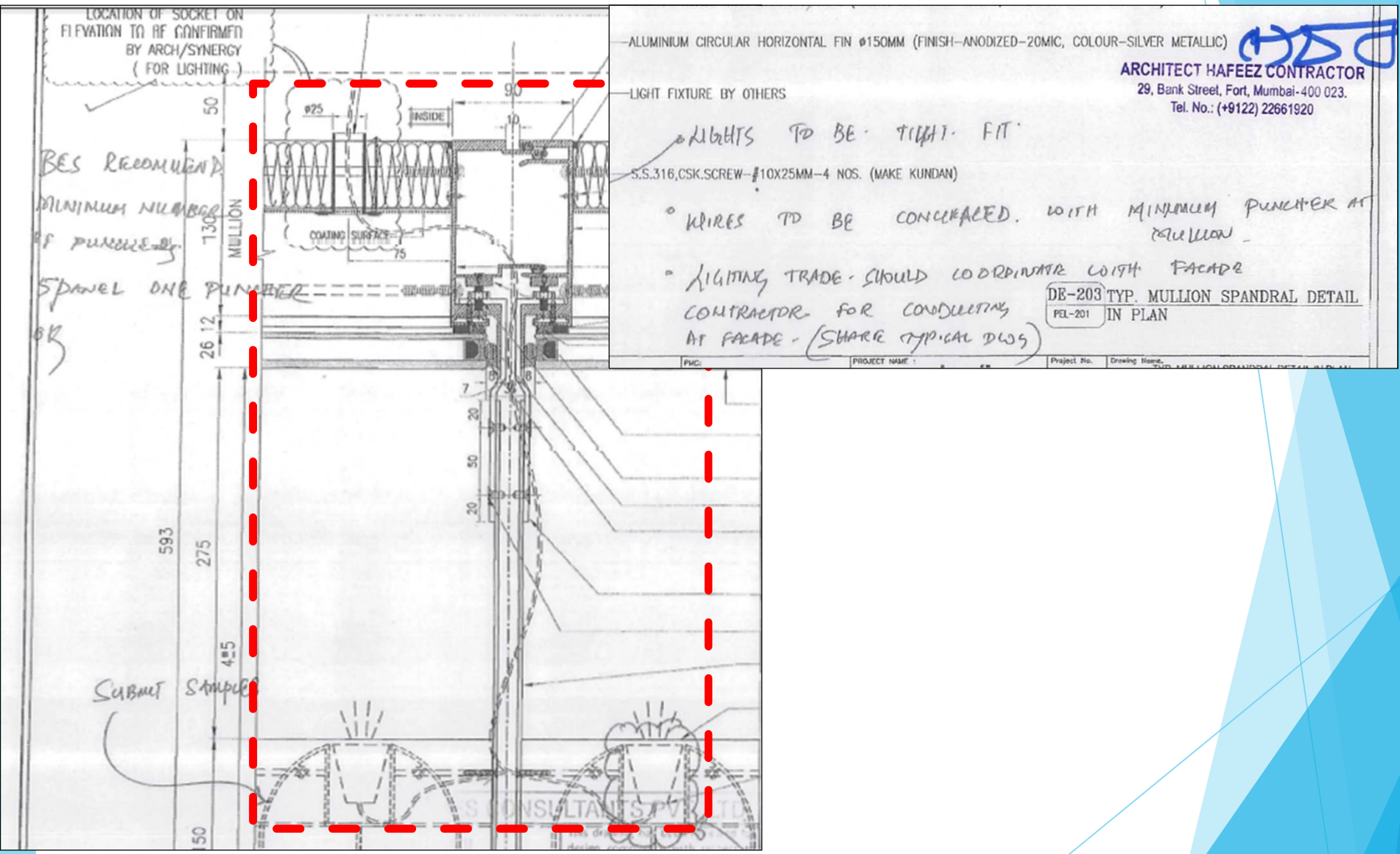
Floor :3rd Floor ; Panel for which shifting is done.

Broken Glass is replaced with New DGU.

• Important Details from Drawings



• Important Details from Drawings



LOCATION OF SOCKET ON FIXATION TO BE CONFIRMED BY ARCH/SYNERGY (FOR LIGHTING)

ALUMINIUM CIRCULAR HORIZONTAL FIN ϕ 150MM (FINISH-ANODIZED-20MIC, COLOUR-SILVER METALLIC)

LIGHT FIXTURE BY OTHERS

ARCHITECT HAFEEZ CONTRACTOR
29, Bank Street, Fort, Mumbai-400 023.
Tel. No.: (+9122) 22661920

BEST RECOMMENDATION
MINIMUM NUMBER OF PUNCHES
SPANEL ONE PUNCHER
OK

50
130
26.12
593
275
4.5
50

INSIDE
COATING SURFACE
75

90
10
7
20
50
20

S.S.316,CSK.SCREW-#10X25MM-4 NOS. (MAKE KUNDAN)

Wires TO BE CONCEALED WITH MINIMUM PUNCHER AT MULLION

LIGHTS TO BE TIGHT FIT

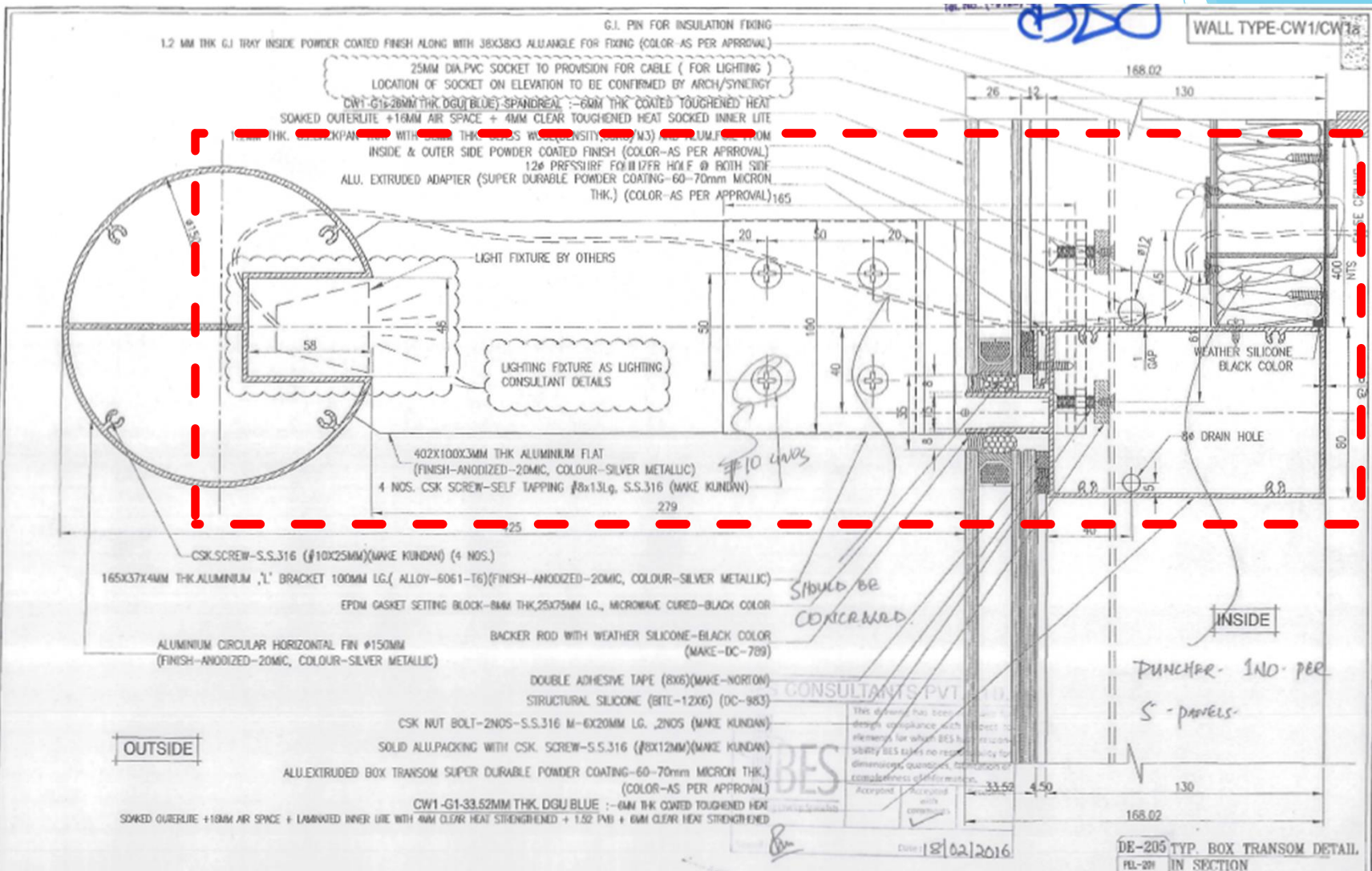
LIGHTING TRADE SHOULD COORDINATE WITH FACADE CONTRACTOR FOR CONDUCTING AT FACADE - (SHARE TYPICAL DWS)

DE-203 TYP. MULLION SPANDRAL DETAIL
PEL-201 IN PLAN

PROJECT NAME: PROJECT No. Drawing Name:

Mullions are punctured for Cable of Lighting Fixture

Important Details from Drawings



Innovators
 Facade Systems Pvt. Ltd.
 20, B-65/37B-1, SHANTI NAGAR, NEW DELHI, INDIA 110048
 TEL: 281 2511 / 281540, 081 2811 4381
 EMAIL: www.innovator.in

REV.	DATE	DESCRIPTION	BY	CHKD.
01	15.12.15	AS PER COMMENTS BY BES		
02	21.11.15	AS PER COMMENTS BY BES		
03	06.11.15	AS PER COMMENTS BY BES		
04	04.09.15	AS PER COMMENTS BY BES		

Client: Adani Developers Pvt. Ltd

Project Name: adani BKC

Consultant: BES Consultant Pvt. Ltd

Architect: Architect Hafeez Contractor

Project No.	Drawing Name	Scale	Date	Rev.	Drawn By	Checked By	Appr. By
P-251	TYP. BOX TRANSOM DETAIL IN SECTION	1:1	03.02.2016	NCL	NCL	NPS	-